



LAND DEVELOPMENT

QUICK FACTS

DEVELOPER:
TRINITY HILLS
DEVELOPMENT

SIZE:
105 HECTARES

**CONSTRUCTION
VALUE:**
\$5,000,000

**PROCUREMENT
MODEL:**
BID BUILD

LAFARGE'S ROLE:
SURFACE WORKS
CONTRACTOR

**LANE
KILOMETRES
CONSTRUCTED:**
2 LANE KILOMETRES

**COMPLETION
DATE:**
2018

TRINITY HILLS

CALGARY, AB

PROJECT OVERVIEW

Lafarge completed the surface construction of Medicine Hills as a subcontractor to Whissell Contracting Ltd.

This project included a compressed construction schedule that aligned with the opening of the 16th Ave/Bowfort Road Bridge and intersection.

The scope of work involved subgrade prep, granular base and subbase, asphalt paving, catch basin installation, and the following concrete structures: 250 STD and REV C&G, 500 STD and REV C&G, median fill, bus aprons, stamped concrete struck aprons and separate sidewalks.



EFFECTIVE LEADERSHIP

PROJECT MANAGER



LEAH HERLE

CONCRETE/ UNDERGROUND SUPERINTENDENT



RICK THIESSEN

PAVING SUPERINTENDENT



TYLER HIGH

BASE & GRADING SUPERINTENDENT



BRIAN POW

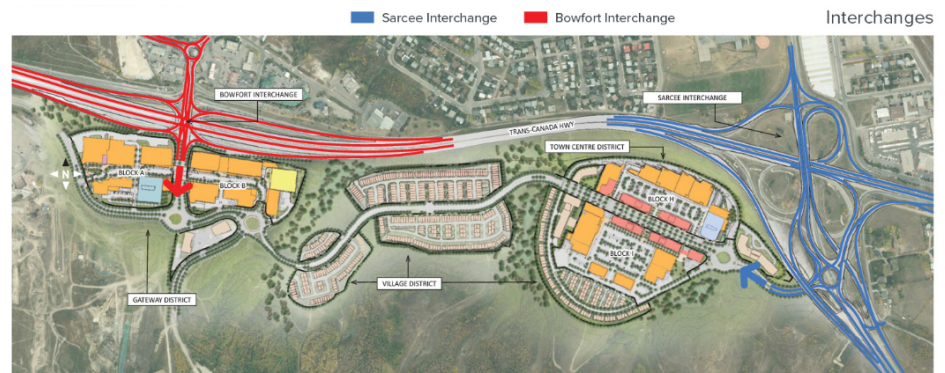
TRINITY HILLS

NEW SENSE OF PLACE

Dubbed as "Canada's greatest new urban village", Trinity Hills is located adjacent to Canada Olympic Park with direct access to all areas of the City and the mountains west of the city. Once complete, Trinity Hills will provide 700,000 sq ft of retail space, 250,000 sq ft of office space and over 2 million sq ft of residential space.

Lafarge's scope included:

- Subgrade Prep and asphalt road paving- 43,500 m²
- Concrete C&G - 7,000 linear meters
- Regional Pathway Construction - 3,400 linear meters



TIGHT TIMELINES

The Trans-Canada highway/Bowfort Road interchange was scheduled to open August 31, 2017. This deadline meant that Lafarge had to complete our scope of work in the Gateway area of Medicine Hills 2 months ahead of our original schedule. Additional crews were allotted, and a detailed construction sequencing plan was created. Daily production monitoring and work zone monitoring allowed us to not only meet the grand opening date, but exceed it by 2 weeks, allowing the contractor for the interchange ample time to complete their tie-ins and last minute adjustments.



