

SOUTH SHORE CORRIDOR IMPROVEMENT



HIGHLIGHTS:

DESCRIPTION:

Road and utility construction

LOCATION:

Vancouver, BC

CLIENT:

Port Metro Vancouver

PROJECT VALUE:

\$75 M

VALUE OF CIVIL WORKS:

\$12 M

PROJECT COMPLETED:

October 2014

MATERIALS SUPPLIED:

Aggregate - 50,000 tonnes

Asphalt - 22,200 tonnes

THE PROJECT

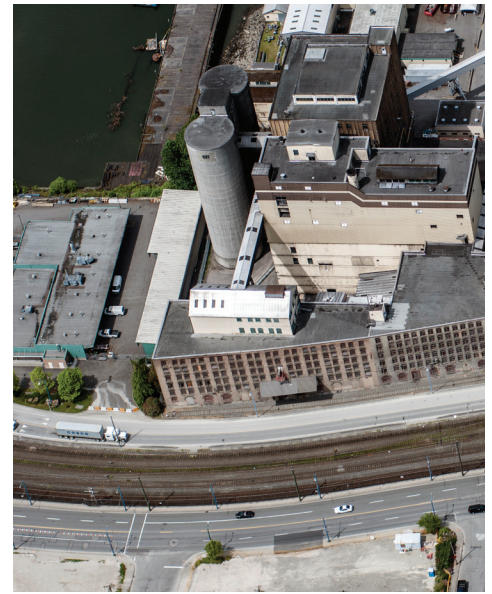
The South Shore Corridor Roadway Upgrade Project was designed to enhance the port of Metro Vancouver road capacity and future port rail capacity along the port's south shore corridor. The project consisted of rail realignment, utility relocation and a road works reconstruction package for Commissioner Street, Stewart Street and Centennial Road.

THE SCOPE

The project scope included the provision of an 800m elevated road, a 30m pedestrian overpass, a 1,500m realignment and widening of Commissioner street, upgrading and rebuilding the port entrances, improving two intersections on city streets and general control system improvements across the south shore.

The project required extensive coordination with Port Metro Vancouver shipping schedules and stakeholders throughout the corridor, with daily coordination on 24 hour operations.

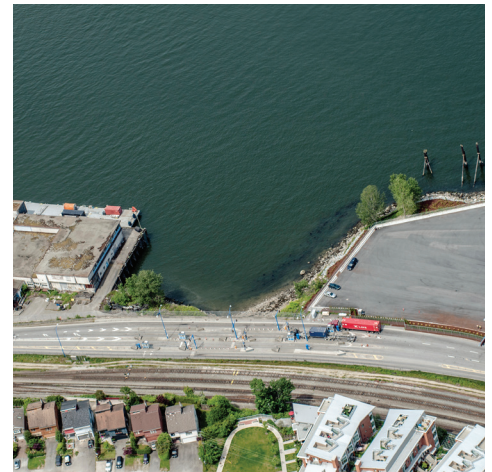
Benefits of the project included reduced congestion, noise and delays, improved operational control of vehicles, improved road safety, and the capacity to add an additional east-west railway track.



LAFARGE PARTICIPATION

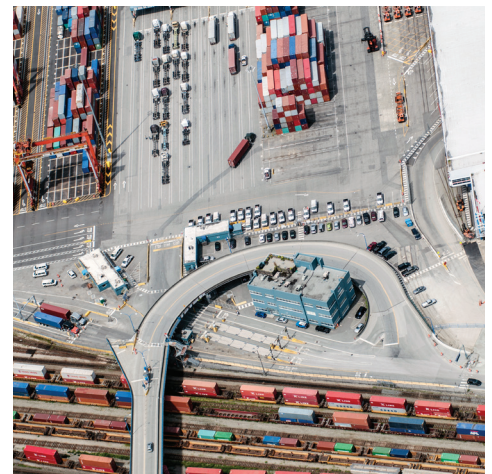
Lafarge was the general contractor for the project and also supplied approximately 22,000 tonnes of asphalt, 50,000 tonnes of aggregates and provided construction services for related construction work.

Due to Lafarge's exceptional performance and historical knowledge in delivering construction services in a work zone with continual adjacent traffic flow, Lafarge was contracted by Port Metro Vancouver, in a separate contract, to also coordinate and manage the truck staging requirements for all port traffic. Detailed traffic management plans, comprehensive safety program and a project sustainability program were developed and implemented in collaboration with the Vancouver Fraser Port Authority.



PROJECT DELIVERY

Various subcontractors and trades were utilized for the duration of the project. Lafarge used a sustainability approach to procure and deliver materials, which included the use of Reclaimed Asphalt Pavement (RAP), and "Warm Mix" Asphalt, products under the Lafarge Circular Economy Climate Pillar. The "Warm Mix" Asphalt was produced in our Port Kells and Mitchell's Island Plants. These plants' ability to produce "Warm Mix" asphalt materials reduces the carbon footprint of asphalt pavement production and construction, thus reducing greenhouse gas emissions for reduced environmental impact.



CONSULTANT REFERENCE:

NAME:	Julie Edgar
TITLE:	Project Manager, PNR Railworks
TELEPHONE:	(604) 751-5300
EMAIL:	jedgar@pnrrailworks.com

CLIENT REFERENCE:

NAME:	Justin Pedley
TITLE:	Project Director, Port Metro Vancouver
TELEPHONE:	(604) 665-9247
EMAIL:	justin.pedley@portmetrovancover.com



Lafarge Western Canada
CORPORATE OFFICE
 300-115 Quarry Park Road SE
 Calgary, AB T2V 5G9

Lafarge.ca