



LAND DEVELOPMENT

QUICK FACTS

CLIENT:
**THE CITY OF
EDMONTON**

SIZE:
4.5 KM²

**CONSTRUCTION
VALUE:**
\$15,000,000

**PROCUREMENT
MODEL:**
BID BUILD

LAFARGE'S ROLE:
**SURFACE WORKS
CONTRACTOR**

**COMPLETION
DATE:**
2014

NEIGHBOURHOOD RENEWAL PROGRAM

EDMONTON, AB

PROJECT OVERVIEW

The Neighbourhood Renewal program is part of the Building Great Neighbourhoods initiative. It outlines a cost effective, long-term strategic approach to renew and rebuild roads, sidewalks and streetlights in existing neighbourhoods and collector roadways. The program balances the need to rebuild in some neighbourhoods with a preventive maintenance approach in others.

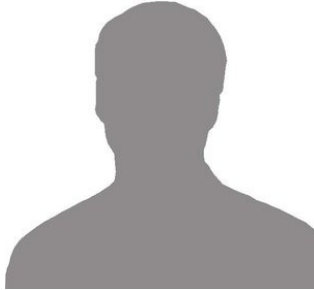
Lafarge completed works for the City of Edmonton as part of this initiative over the course of two years in a variety of communities. Our scope included roadway repairs, curb/gutter and sidewalk replacement, and streetlight replacement.

Benefits of the program include:

- Combination of reconstruction, overlay, and preventive maintenance means neighbourhoods benefit faster and at a lower cost than a reconstruction-only program
- Replace sidewalks that have cracking, protruding grass, and trip hazards
- Replace uneven curbs and gutters
- Repave roadways that have potholes, cracks, and broken asphalt
- Replace rusting and tilted light stands
- Construct curb ramps and other intersection improvements
- Address missing links in sidewalks and bike system per the Sustainable Transportation strategy plans
- Decorative streetlight option for neighbourhoods scheduled for reconstruction

EFFECTIVE LEADERSHIP

PROJECT MANAGER



ANDREW
MELNYCHUK

SUPERINTENDENT



FRANK COLOSIMO

SUPERINTENDENT



ENZO CARNAVALE

NEIGHBOURHOOD RENEWAL EDMONTON

SCOPE DETAILS

1) Installation of new streetlights (standard or decorative) throughout the neighbourhood



2) Removal of curbs/gutters and sidewalks, laying base, and pouring concrete



3) Building sidewalks around obstacles (trees, fire hydrants, etc.)



4) Replacing sidewalk links to existing walks on private homeowner property



5) Completing required landscaping



6) Completing road rehabilitation and paving



INVOLVED COMMUNITIES

- GLENORA
- WEST JASPER PLACE
- JASPER PARK
- MEADOWLARK PARK

NEIGHBOURHOOD RENEWAL EDMONTON



LAFARGE
PROJECT IMAGES

**NEIGHBOURHOOD RENEWAL
EDMONTON**

