

QUICK FACTS**CLIENT:**
**VANCOUVER FRASER
PORT AUTHORITY****START DATE:**
MAY, 2019**END DATE:**
JULY, 2019**TENDER PRICE:**
\$11M**CONSULTING
ENGINEER:**
**ISL ENGINEERING AND
LAND SERVICES****LAFARGE'S CONTRACT
STRUCTURE:**
GENERAL CONTRACTOR**PROJECT DESCRIPTION**

This project involved construction of a Truck Staging Facility on Deltaport Way for trucks heading towards Deltaport.

Scope of civil work included grading, paving, line painting, barrier relocation and drainage installations.

Electrical work included the installation and relocation of electrical and fibre optic networks, installation of luminaires, dynamic message signs, detector loops, signal lights, speakers and security features such as cameras, lifts gates and card readers.

Structural works included pile driving, pile cap construction, concrete base slabs and a shotcrete retaining wall with hollow core anchors.

Landscaping work included bollards, swing gates, pedestrian fences and hydro-seeding.



EFFECTIVE LEADERSHIP

CORPORATE SPONSOR



GORD BIRD

PROJECT MANAGER



HENRY CHANG

PROJECT COORDINATOR

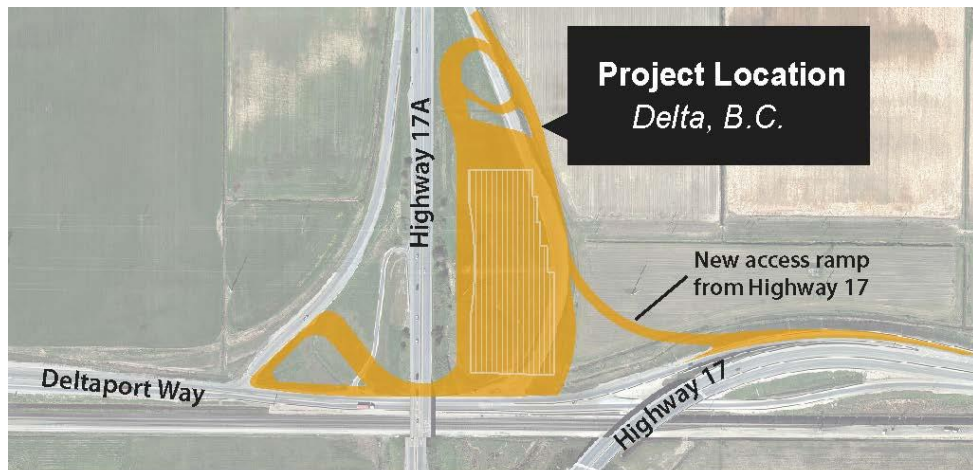


PETER HOLMES

PROJECT SCOPE

Managing several contractors responsible for excavations, drainage installations, utility installations, subbase grading, shotcrete wall construction, pile driving, pile cap construction, concrete slab construction, installation of electrical instruments, detector loops, lift gates, luminaire poles, fence installation, bollard installation.

Lafarge was also responsible for grading the road base, asphalt paving, road shoulder and performing site maintenance and deficiency work.



VOLUME OF MATERIALS

- **Concrete:**
200 m³
- **Asphalt:**
20,000 tons
- **Aggregates:**
22,000 m³
- **Lane-km of Road:**
7.5 km
- **Lineal Metres of Sidewalk C&G:**
265 curb only

REFERENCES

- **Company:**
VANCOUVER FRASER PORT AUTHORITY
- **Name:**
Payman Pegahi,
M.A.Sc., P. Eng.
- **Title:**
Manager, Infrastructure
Delivery
- **Phone:**
(604) 356 – 9070
- **Email:**
payman.pegahi@portvancouver.com

PROJECT CHALLENGES AND SOLUTIONS

Schedule Management:

Dealing with crew shortages during the COVID-19 pandemic, and dealing with steel supply issues during a trade war.

Traffic Management:

Managing truck traffic coming from highway 17 to Deltaport Way was a challenge. Truck drivers often do not follow speed limits and are focused on making quick deliveries.

Environmental Management:

Protecting an active eagle's nest on site and maintaining water quality that infiltrates into nearby irrigation ditches.

Subcontractor Management:

It had to be ensured that contractors understand the submittal process, QC standards, and safety standards that are associated with MoTI Projects.

